



JOC303XD5 Series

Rev.A.1.1

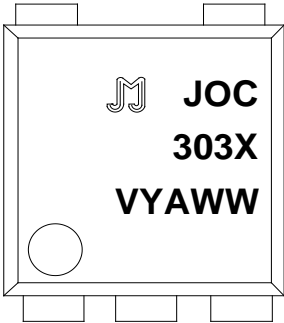
DESCRIPTION:

The JOC303XD5 series combine an AlGaAs infrared emitting diode as the emitter which is optically coupled to a monolithic silicon zero-crossing photo triac in a plastic DIP5

JOC303X

ORDERING AND MARKING INFORMATION

MARKING INFORMATION



Characteristics Curves

FIG.1: Forward Current vs. Ambient Temperature



FIG.2: On-state Terminal Current vs. Ambient Temperature

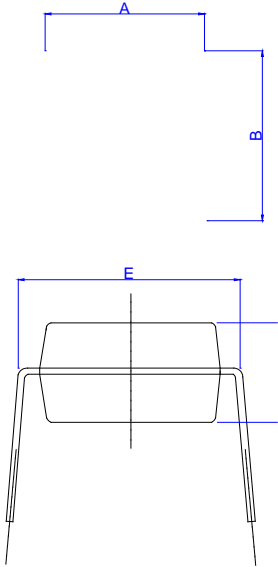
TEST CIRCUITS

FIG.12: Test Circuits of Turn On Time

FIG.13: Waveforms of Turn On Time

Package Dimension (Unit: mm)

Standard DIP Type:



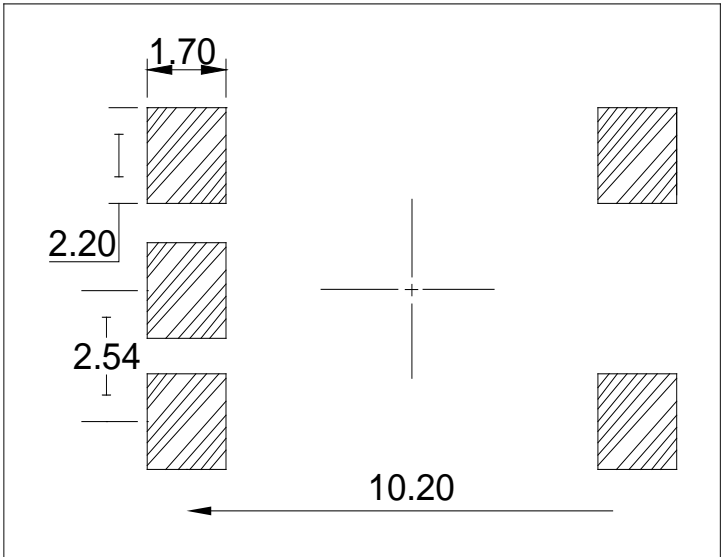
Option S Type:



Option SLM Type:



Option SL

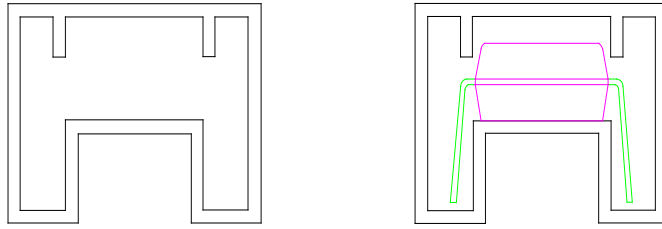


Option SLM



TUBE SPECIFICATIONS (Dimensions in mm unless otherwise stated)

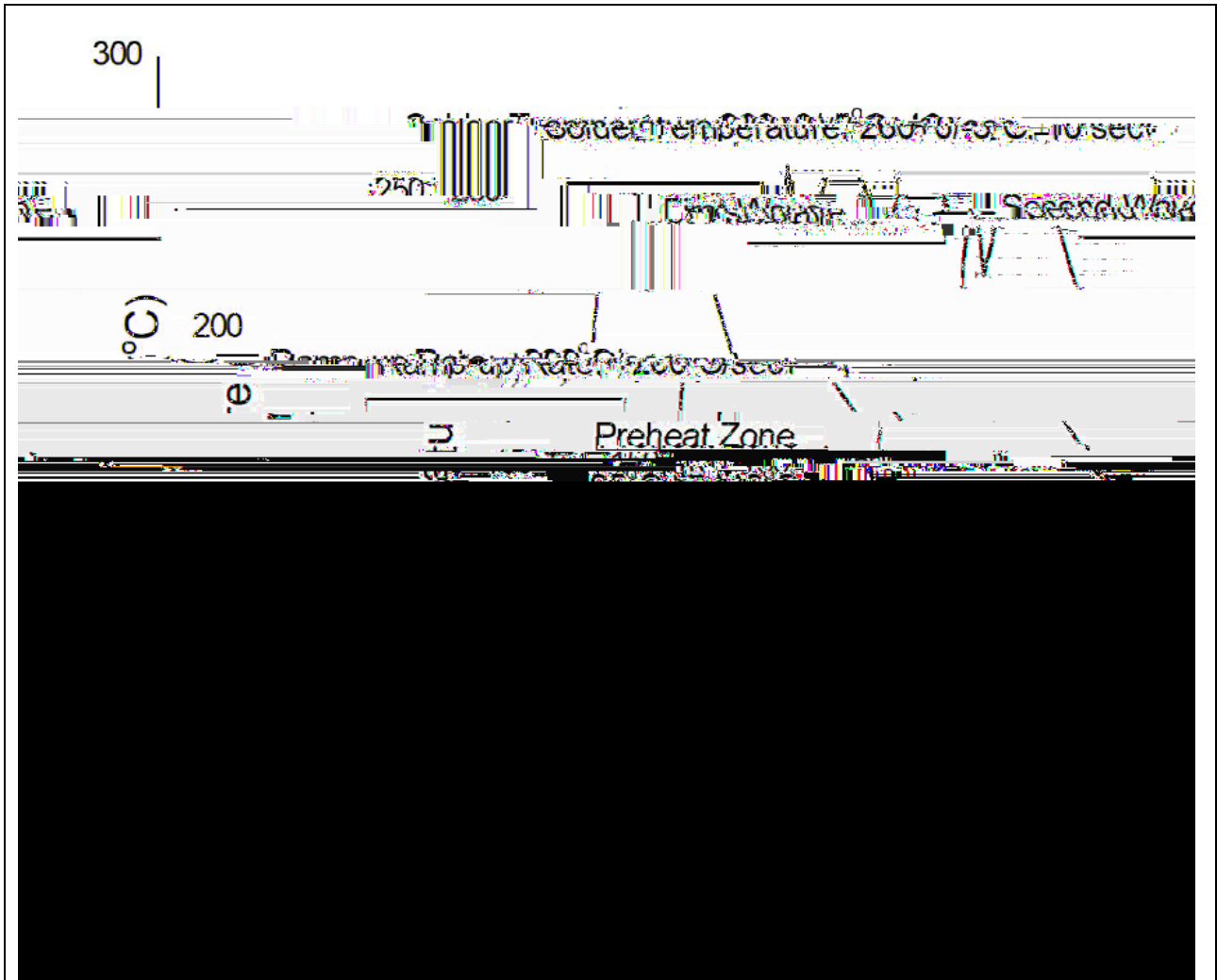
Standard DIP



CARRIER TAPE SPECIFICATIONS (Dimensions in mm unless otherwise stated)



WAVE SOLDERING



HAND SOLDERING BY SOLDERING IRON

Soldering Temperature	360 ± 5
Soldering Time	3s max.

Document Revision History

Date	Revision	Changes
Apr.2, 2025	A.1.0	Last update
Nov.6, 2025	A.1.1	Add S&SLM package

Information furnished in this document is believed to be accurate and reliable. However, Jiangsu JieJie Microelectronics Co., Ltd. assumes no responsibility for the consequences of use without consideration for such information nor use beyond it. Information mentioned in this document is subject to change without notice, apart from that when an agreement is signed, Jiangsu JieJie complies with the agreement.

ProductC BT /P <<Tja0.004ft208 Tw 37.59 0 Tnet[(en)-10 to changhangd4 (a4r/P <<T0.004)