



JOC305XD5 Series

Rev.A.1.1

DESCRIPTION:

The JOC305XD5 series combine an AlGaAs infrared emitting diode as the emitter which is optically coupled to a monolithic silicon random-phase photo triac in a plastic DIP5 package with different lead forming options. With the robust coplanar double mold structure, JOC305XD5 series provide the most stable isolation feature. The products are widely used in solenoid/valve controls, lighting controls, motor controls, temperature controls, static AC power switches, solid state relays, interfacing microprocessors up to 265 V<sub>AC</sub> peripherals.

MAIN FEATURES

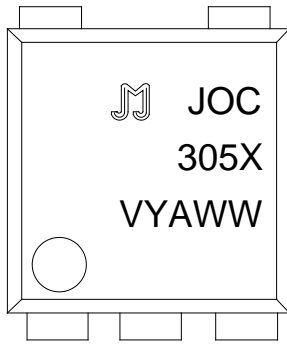
- High isolation 5000 VRMS
- DC input with random-phase photo triac output
- Operating temperature range -55 - Z U - 8 + ' ) . 8 U . 9 I U S V R O G T I K
- HBM: . ' ! 3 3 3
- CQC approved
- VDE approved
- UL approved

Junction Temperature

$T_j$

125

ORDERING AND MARKING INFORMATION

MARKING INFORMATION			
		<p>JOC : Company Abbr.                      305X: Part Number &amp; Pak                      V :</p>	
ORDERING INFORMATION			
JOC305X5(Y)(Z)-GV			
<p>JOG- Company Abbr.                      305X- Part Number(1/2/3)                      D5- DIP5 Package                      Y- Lead Form Option (M/SLSLMNone)                      Z- Tape and Reel Option (T1)                      G- Green Option (G or None)                      V- VDE Option (V or None)</p>			
Packing Quantity			
Option	Quantity	Quantity - Inner box	Quantity -Outer box

Characteristics Curves

FIG.1: Forward Current vs. Ambient Temperature

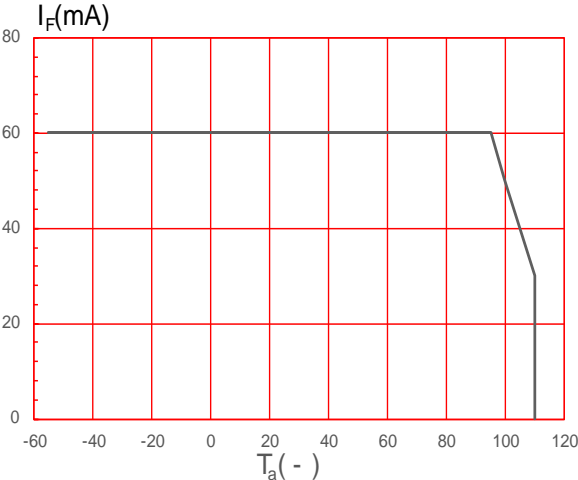


FIG.2: On-state Terminal Current vs. Ambient Temperature



TEST CIRCUITS

FIG.12: Test Circuits of Turn On Time

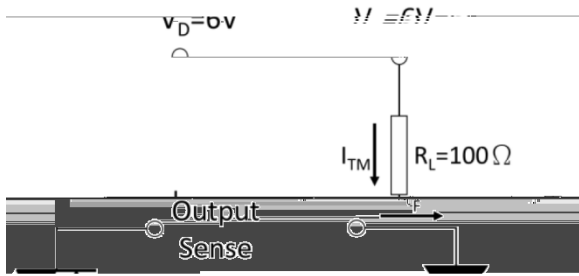


FIG.13: Waveforms of Turn On Time

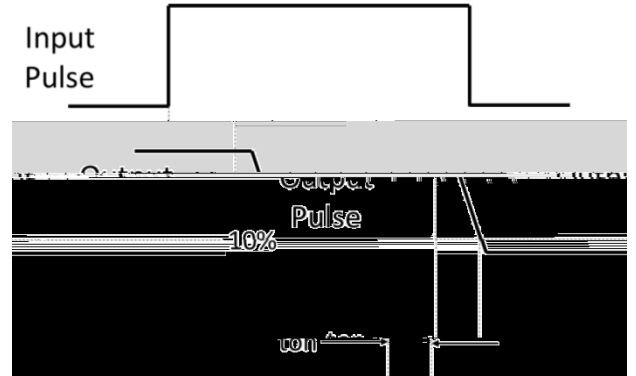


Fig.14: Test Circuits of dV/dt

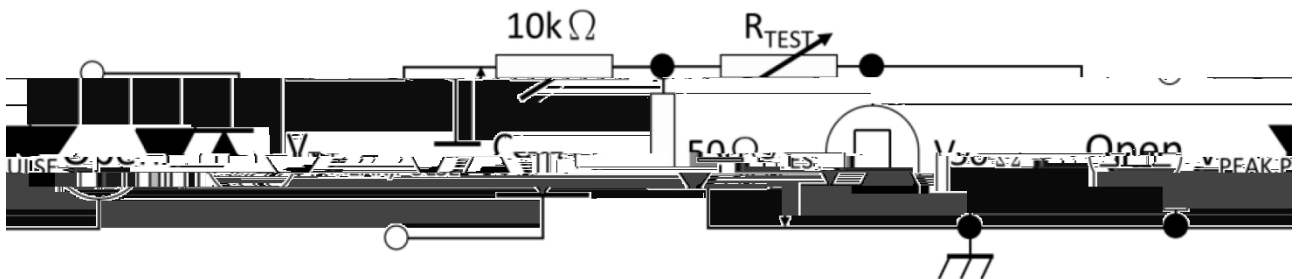


Fig.15: Waveforms of dV/dt



JOC305XD5

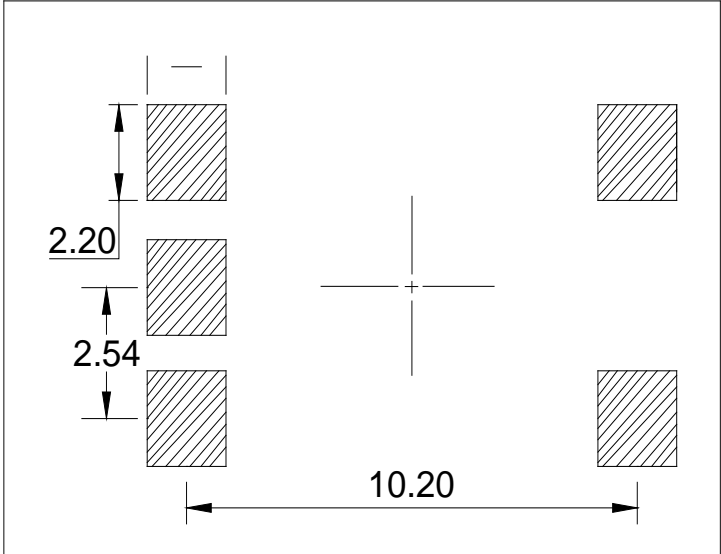
 Jie Jie Microelectronics Co., Ltd.

M 6 ( k 9 0 4  
i l l i m e t e r  
M i n . T y p . M



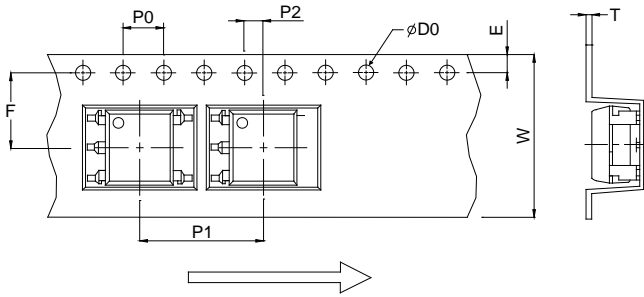


Option SL

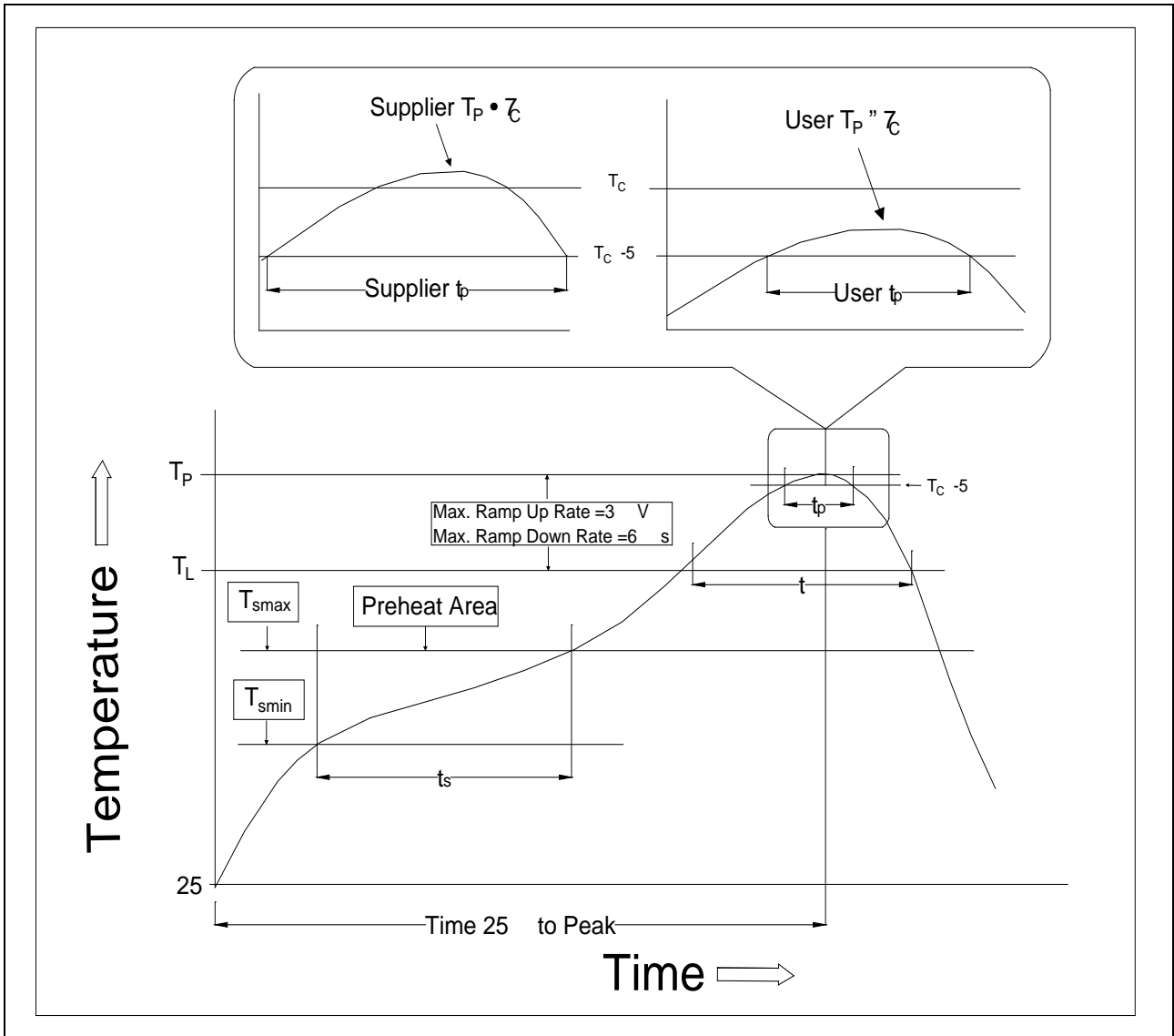




CARRIER TAPE SPECIFICATIONS Dimensions in mm unless otherwise stated



REFLOW INFORMATION

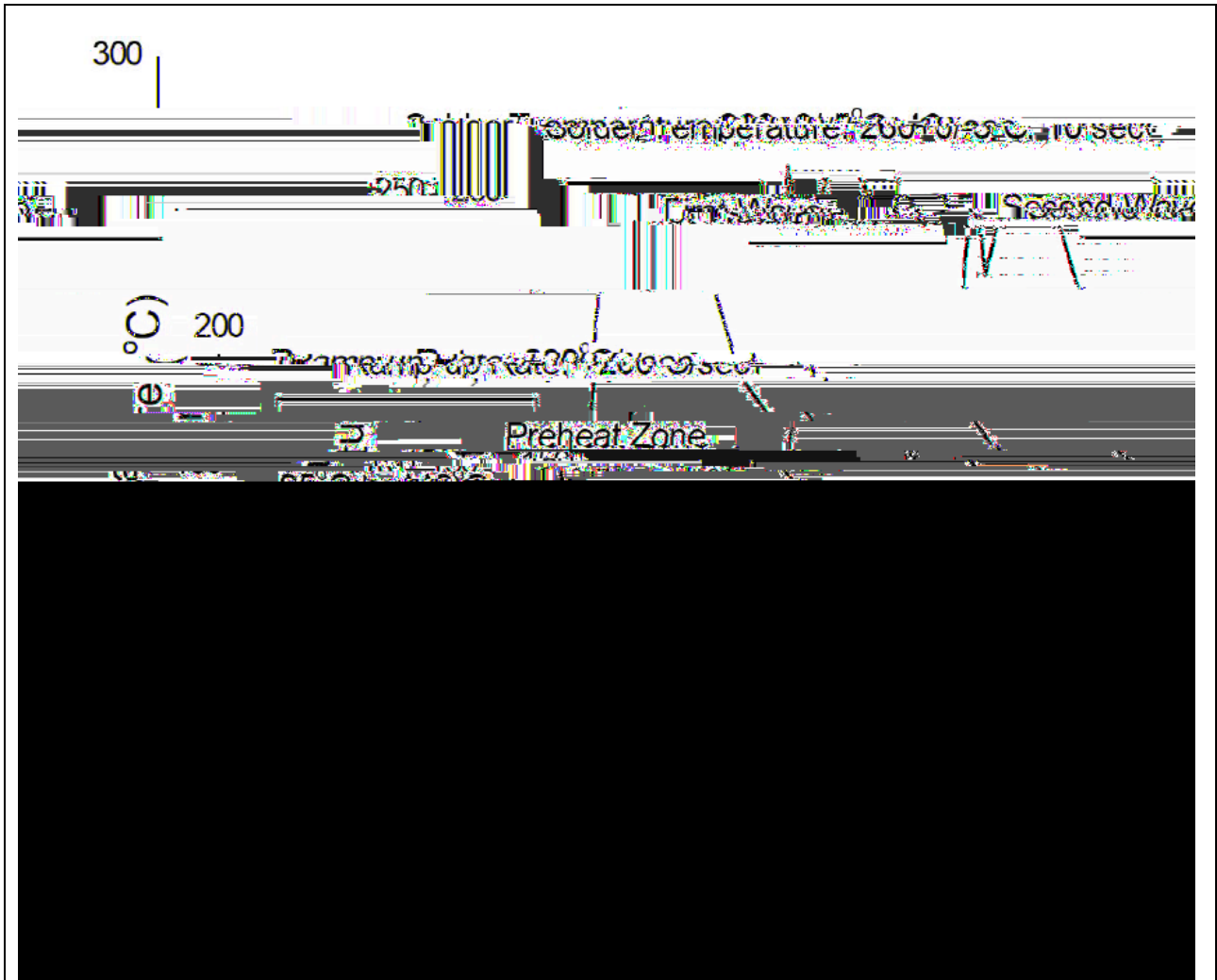


Profile Feature

Sn-Pb Assembly Profile

Pb-Free Assembly Profile

WAVE SOLDERING



HANDSOLDERING BY SOLDERING IRON

Soldering Temperature	360 ± 5
Soldering Time	3s max.

## Document Revision History

Date	Revision	Changes
Apr.2, 2025	A.1.0	Last update
Nov.5, 2025	A.1.1	Add S&SLM package

Information furnished in this document is believed to be accurate and reliable. However, Jiangsu JieJie Microelectronics Co., Ltd. assumes no responsibility for the consequences of use without consideration for such information nor use beyond it. Information mentioned