



JOC305XM4 Series

Rev.A.1.0

DESCRIPTION

The JOC30 5XM4 series combine an Al GaAs infrared emit diode as t he emit siliconrandom -phase phot SOP4 pack o t Wit t h he robust series provide t he most are widel ysed in sol enoid/val ue cont rols, light mot or cont t 65 VAc at solid st peripheral s.

FEATURES

- High isol at 3750 VRMS ion
- DC input -phase phot wit o t
- Operat 55 to 100 ing t
- REACH & RoHS compl iance
- Hal ogen free
- MSL cl ass 1
- HBM : H3A ; MM: M4
- CQC approved
- VDE approved
- UL approved

ABSOLUTE

(Temperat

Parameter		Symbol	Value	Unit
Input	Forward Current	I_F	60	mA
	Reverse Vol t	V_R	6	age V
	Junct	T_j	125	ion Temperat
	I nput	P_I	100	Power Dissipat
	Power Dissipat ($T_a = 25^\circ C$)	$P_{D/}$	-1.33	ion Derat mW /

Out

put

~~Q~~ ~~ADME~~ ~~51311 (444) 1571(j)-11 (5) 2 0-3.1 (458)~~

CS

FIG.1: Forward Current

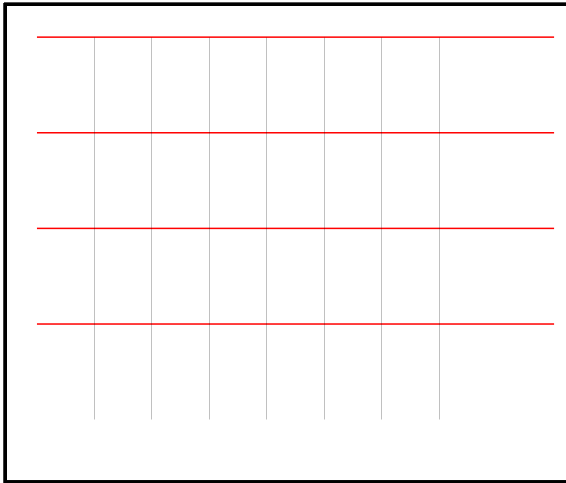


FIG.2: On-st vs. Ambient
Temperat ~~100~~ 80

TEST

FIG.12: Test

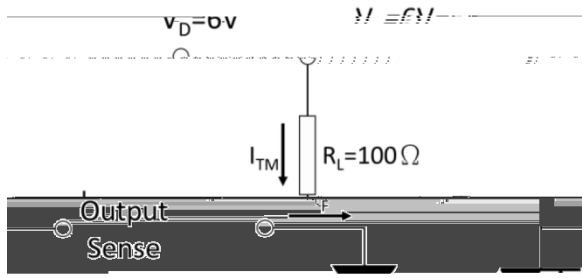


FIG.13: Waveforms of Turn On Time

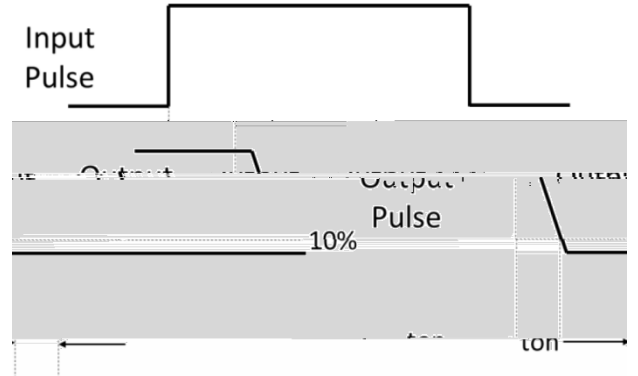


Fig.14: Test Circuits of dV/dt

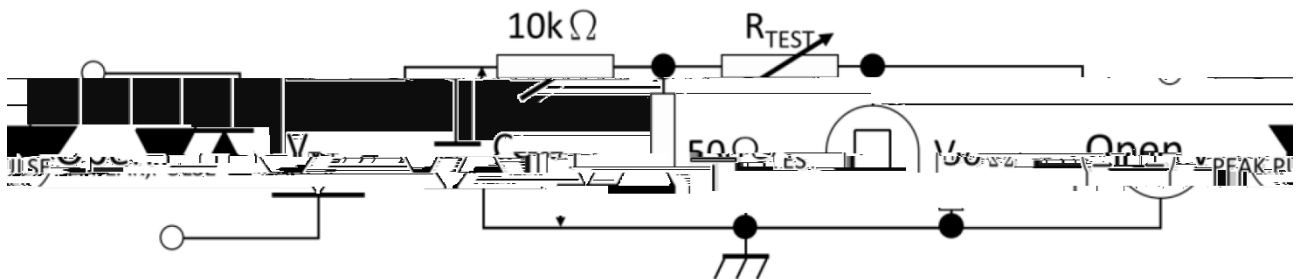
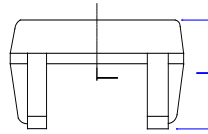
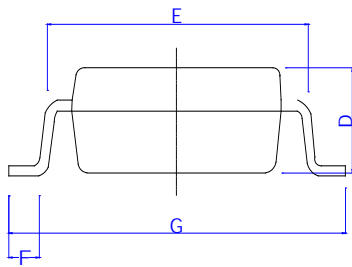
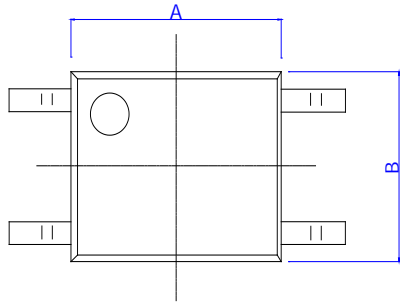


Fig.15: Waveforms of dV/dt





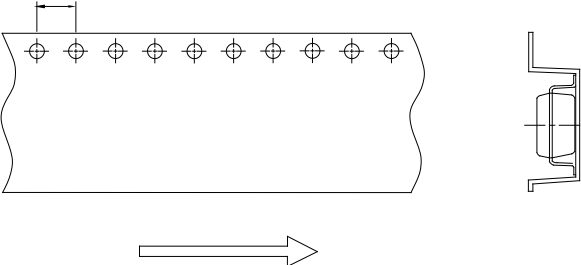
: m



Ref.	Dimensions					
	Millimet			Inches		
	Min.	Typ.	Max	Min.	Typ.	Max
A	4.20		4.85	0.165		0.191
B	3.30		4.40	0.130		0.173
C						
D	1.75		2.80	0.069		0.110
E	4.90		5.80	0.193		0.228
F						
G	6.30			0.248		
H						
I						
J						

CAR BEAR)

Ø



R52C5

