



JOCDE0CB-M5

Rev.A.1.0

) -o#k@u@V

7KH SURGXFWV D U R S W B W F R X S U L Y U W L Q W K H 6 2 3
SDFNDJH 7KH GHYLDH R Q Q V D U W G R (' R S W L F D O O \\
FRXSOHG WR DQ L Q L V H J K L D W H V S H K H G K S J K R W R G H W H F W R U
, & F K L S , W S U R Y L G H V J X D U D Q W H H G S H U I R U P D Q F H D Q G V S
D W W H P S H U D W X U W X S W R \ V L F D O O \ V P D O O H U D Q G
FRPSOLDQW ZLWK LQWHUQDWLRQDO VDIHW \ VWDQGDUGV IR
LQVXODWLRQ , W W K X V S U R Y L G H V D V P D O O H U I R R W S U L Q W
IRU DSSOLFDWLRQV W K D W U H T X L U H V D I H W \ V W D Q G D U G F H U
L Q W H U Q D O Q R L G H V V D L J X O G D S Q W M H G F R P P R Q P R G H
W U D Q V L H Q W L P P X Q L W \ L R I L " G H D D M R U 7 V P D O O F O D V V , *
D Q G S R Z H U 0 2 6) (7 J D W H G U L Y H 7 K H S U R G X F W V D U H Z L G H O
L Q L Q G X V W U L D O L R Y G U L W H U V 0 * 2 6) (7 J D W H G U L Y H U V
L Q G X F W L R Q F R R N W R S D Q G K R P H D S S O L D Q F H V

U ° @ 7 ° uyk - o

\$ P D [L P X P S H D N R X W S X W F X U U H Q W
+ L J K L V R O D W L R Q 9 5 0 6
% X I I H U O R J L F W \ S H
2 S H U D W L Q J W H P S H U D W X U W R f &
5 (\$ & + 5 R + 6 F R P S O L D Q F H
+ % 0 + \$ 0 0 0 & ' 0 &
& 4 & D S S U R Y H G
9 ' (D S S U R Y H G
8 / D S S U R Y H G

u u

, Q S X W	/(')	2 X W S X W
+	2 1	/
/	2))	+

° " o \ Q y u - U ° @ y U k ° u @ 8 o 7 H P S H U D W X U H f &

Parameter	Symbol	Value	Uni	mn
-----------	--------	-------	-----	----



	3RZHU 'LVVLSDWLRQ	3'		P:
'HWHFWRU	2XWSXW 9ROWDJH	2	9	
	6XSSO\ 9ROWDJH	9&&		
	3RZHU 'LVVLSDWLRQ	3&		P:
,VRODWLRQ 9ROWDJH	9LVR		8	9UPV
2SHUDWLQJ 7HPSHUDWXUH	7RSU		a	
-XQFWLRQ 7HPSHUDWXUH	7M			
6WRUDJH 7HPSHUDWXUH	7VWJ		a	
7RWDO 3RZHU 'LVVLSDWLRQ	3WRW			P:
6ROGHULQJ 7HPSHUDWXUH	7VRO			

V\U- íì • %o μo • U íì, ì (œ ‹ μ v Ç
 V\U- ()œ íu]vμš U ZX, XAđì • òì9

-O#uk@° O# = ° k° #u-k@u@o 7HPSHUDWXUH f &

	Parameter	Symbol	Condition	Min.	Typ.	Max.	Unit
,QSXW)RUZDUG 9ROWDJH)) 9P\$,			9
	5HYHUVH &XUUHQW		5 9	9			\$
	7HUPLQDO &DSDFLWDQ		7H I 0+&				S)
	3HDN +LJK OHYHO 2XWSXW*1' &XUUHQW	,23+) P\$				P\$
			9&& 9				P\$
) P\$				P\$
	3HDN /RZ OHYHO 2XWSXW &XUUHQW	,23/	9&& 9 ₂ 9				P\$
			9&& 9 ₂ 9				P\$
	+LJK /HYHO 6XSSO\ &XUUHQW	,&&+) P\$				P\$
		9&& 9				P\$	



			9) 9				9
	7KUHVKROG ,Q SXW &XUUHQW)/+	9&& 9 9 ₂ Ú 9				P\$
	7KUHVKROG ,Q SXW 9ROWDJH	9)/+	9&& 9 9 ₂ Ø 9				9
	6XSSO\ 9ROWD	JH 9&&					9

of @#=@/8'ch-#@# u@V'

Parameter	Symbol	Condition	Min.	Typ.	Max.	Unit
3URSDJJDWLRQ 'HOD\ 7LPH WR +LJK 2XWSXW /HYHO	V_{W+}	5J &J Q)) : P\$ 9&& 9				Q V
3URSDJJDWLRQ 'HOD\ 7LPH WR /RZ 2XWSXW /HYHO	V_{W+}	5J &J Q)) : P\$ 9&& 9				
3URSDJJDWLRQ 'HOD\ 'LIIHUHQFH %HWZHHQ \$Q\ 7ZR 3DUWV	V_{W+} , V_{W-}	5J &J Q)) 8: P\$ 9&& 9				
2XWSXW 5LVH 7LPH	V_{WR}	5J &J Q)) : P\$ 9&& 9				
2XWSXW)DOO 7LPH	V_{WR}	5J &J Q)) : P\$ 9&& 9				
&RPPRQ 0RGH 7UDQVLHQW ,PPXQLW\ DW +LJK /HYHO 2XWSXW	V_{DQ}) P\$ 9&& 9 7D 9 ₂ PLQ 9&0 9SS	"			N 9 V
&RPPRQ 0RGH 7UDQVLHQW ,PPXQLW\ DW /RZ /HYHO 2XWSXW	V_{DQ}) P\$ 9&& 9 7D 9 ₂ PD[9&0 9SS	"			N 9 V

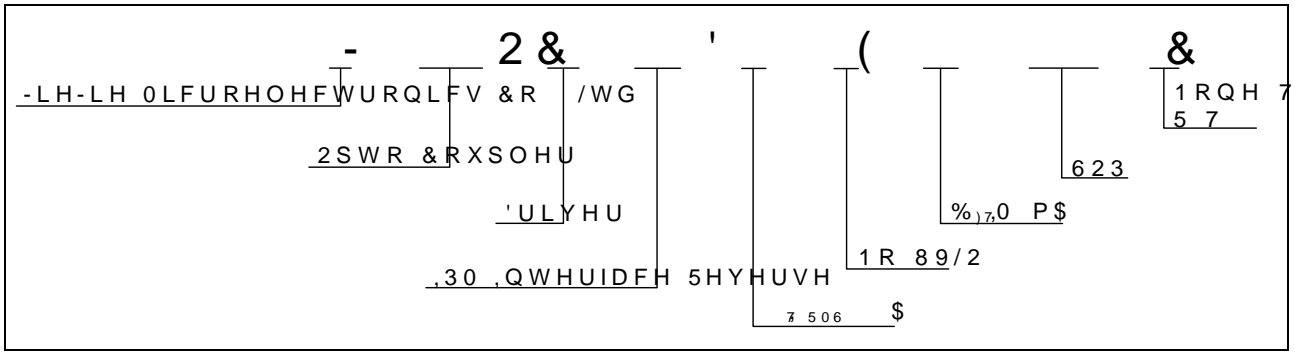
oo dÇ%] o Âîñµ • š d
V W /v%µš •]Pv o ~(Aîñl, ìU µšÇAñ]i9 b š•CEAZš (vA ññ •%)&CE Áoz }•Z X]v
%oCE} v •šCE Ç Á]CE]vP %o]š v X



k	\	#	78 .			
Characteristics	Symbol	Min.	Typ.	Max.	Unit	



\k) -k@8@7\kU °u@V



U °kM@8'



FIG.7: /RZ OHYHO 2WWSXW V9RSP
7HPSHUDWXUH

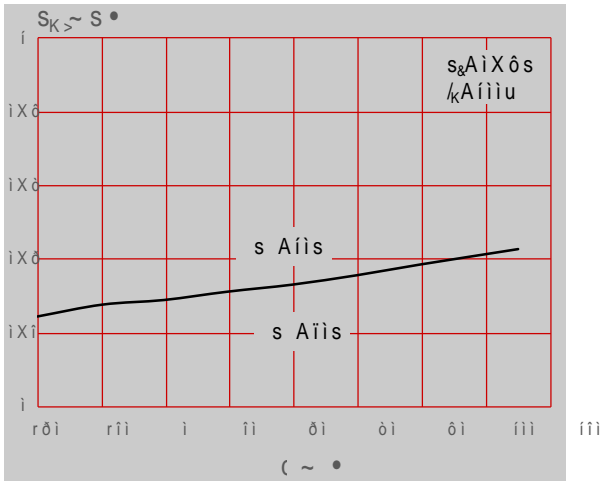


FIG.8: +LJK OHYHOR 2XWDSXWY 9
7HPSHUDWXUH

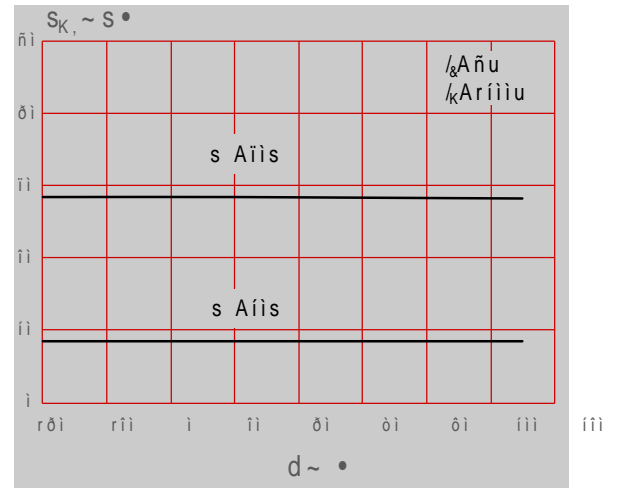


FIG.9: /RZ OHYHO 2WWSXW V9R3HDN /R
OHYHO 2XWSXW &XUUHQW

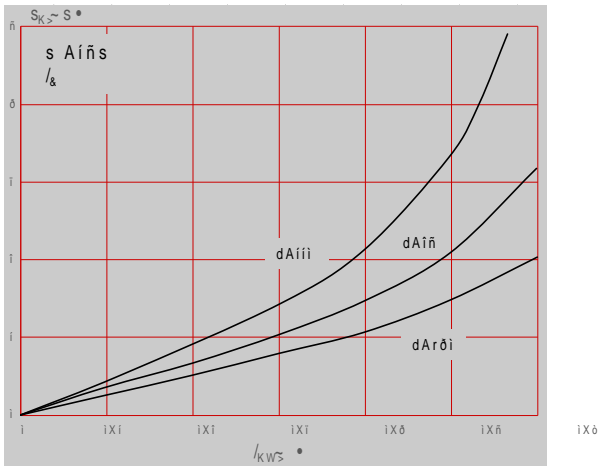
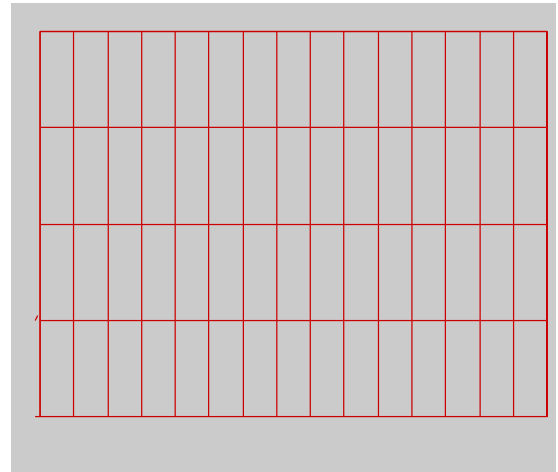


FIG.10: +LJK OHYHO 2XWSXW 9ROWD
3HDN +LJK OHYHO 2XWSXW &XUUHQW





h) y . . .

```

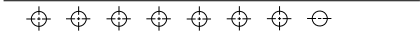
'LPHQVLRQV
5HI      0LOOLPHWHUV      ,QFKHV
0LQ 7\ S 0D[ 0LQ 7\ S 0D[
$
%
&
'
(
)
*
+
,
-

```



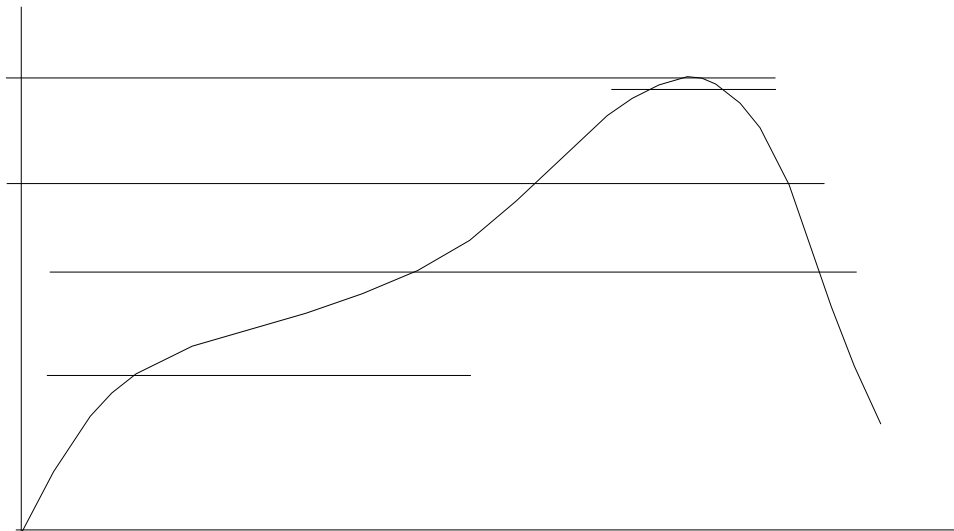
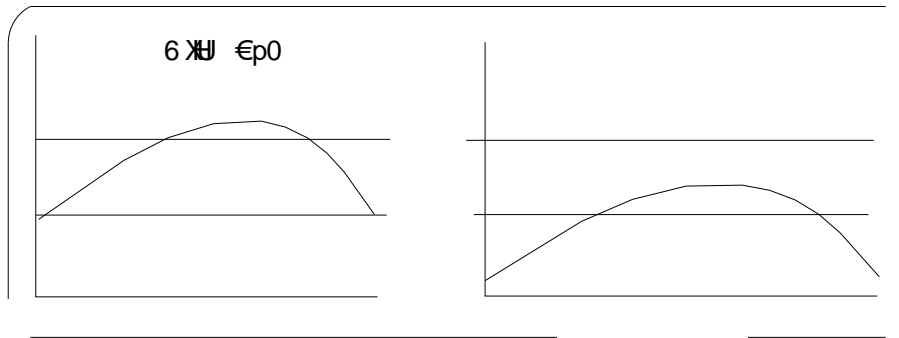
#° kk@k'ù h- 'dh-#@#° u@ Vo')

Option None





k-70A ‡ @7A kU ° u@V



1RWH

5HIORZ VROGHULQJ LV UHFRPPHQGHG/ DWKRVZQH QVHPSHWDWVXDGWVW
\$YRLG GLUHFW FRQVWDHFRPHFRZDQWVXUDFRU H[FHHGLQJ LWV PD
VWRUDJH WHPSHUDWXUH

\$SSOLFDWLRQ RKHSHURVXEHFRQVLSOHGDDWHG WHPSHUDWXUHV ,QV
VFHQDULRV DQHPSSOLHQRWRHFFHHG 1

(QVXUH WKH FRPSRQHQW KDV FRROHG SURFHWHKODQZLHPSWHDXHQL
PDQXIDFWXULQJ VWHSV

7KH FRPSRQHQW HQRV BQVHHDLOZKHQVWDQGHGKFRQGLWLRQV

5HFRPPHQG VWRUDJH 7HPS a f&

5HFRPPHQG VWRUDJH ðÈPLGLW\

06/ OHYHO 06/

,QIRUPDWLRQ IXUQÈFKQW ILQ VVKOLHGRHG WR EH DFFXUDWH D
-LDQJVX -LH-LH 0L&URRHOWHG WDVROÈLFWVQLRVUHRUSVQVLEFRQVHT
RI XVH ZLWKRXW FRQVLGHUDWLRQ IRG MWFKQIQURPDPVRLQRQ
LQ WKLV GRFÈPHQFKLQJYXZELMHFRVWQRWLFH DSDUW IURP V
VLJQH G -LDQJVX&OLHVLZILFRKPWKH DJUHHPHQW
3URGXFWV DQG LQIRUPDWLRQ SURYLGHG LQOPWQWVRGFSÈVPH
-LDQJVX -LH-LH DVVXIPHLOQW\URVSDQVQLQIULQJHPPHQW RI RW
ZKLFK PD\ UHVXOW IURP WKH XVH RI VXFK SURGXFWV DQGML