

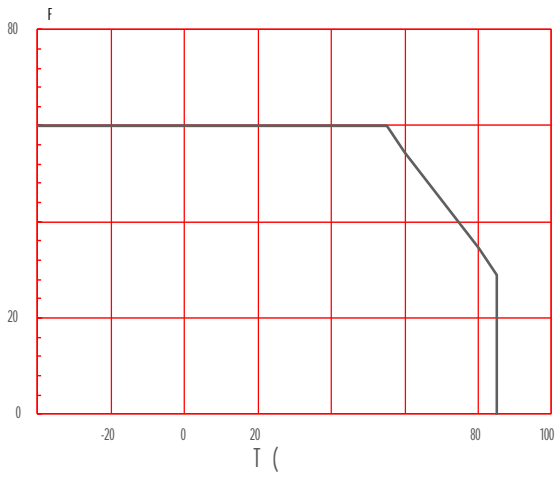


	$\rho = 20 \text{ t/m}^3$	1223		6	
		2223		9	
		3223		12	
			$V_b$	5000	h
			$T_p$	-4085	

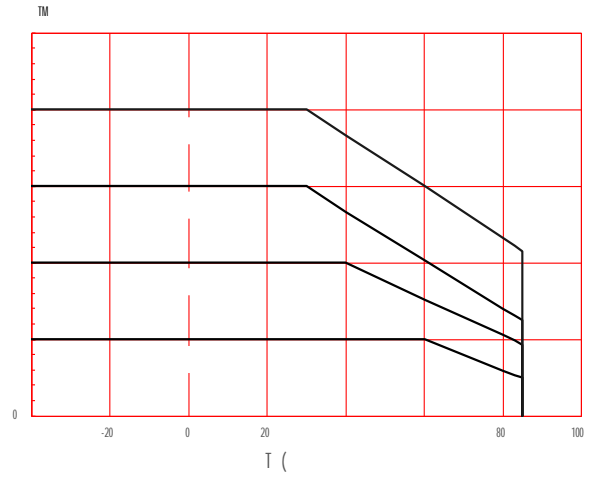


Characteristics Curves

FI F G ~~0~~ ~~10~~ ~~20~~ ~~30~~ ~~40~~ ~~50~~ ~~60~~ ~~70~~ ~~80~~ ~~90~~ ~~100~~ .1:



FI 0 - ~~10~~ ~~20~~ ~~30~~ ~~40~~ ~~50~~ ~~60~~ ~~70~~ ~~80~~ ~~90~~ ~~100~~ .2:



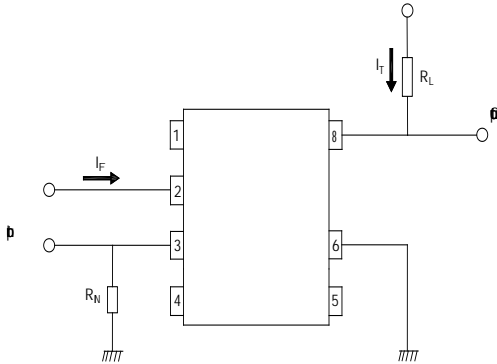
FI F G ~~0~~ ~~10~~ ~~20~~ ~~30~~ ~~40~~ ~~50~~ ~~60~~ ~~70~~ ~~80~~ ~~90~~ ~~100~~ .3:

FI F G ~~0~~ ~~10~~ ~~20~~ ~~30~~ ~~40~~ ~~50~~ ~~60~~ ~~70~~ ~~80~~ ~~90~~ ~~100~~ .4:



TEST CIRCUITS

FI ~~010~~ G .10:

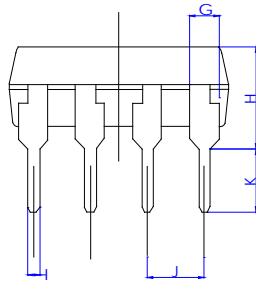
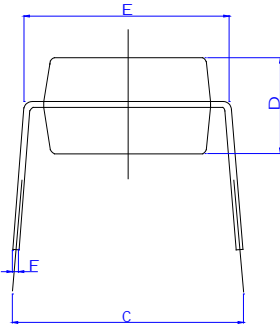
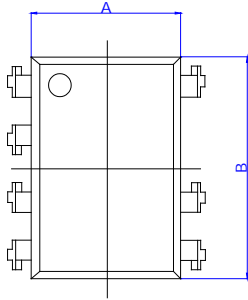


FI ~~010~~ G .11:

Package Dimension (Unit: mm)

DI

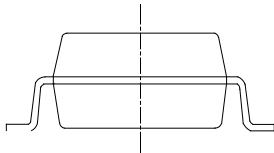
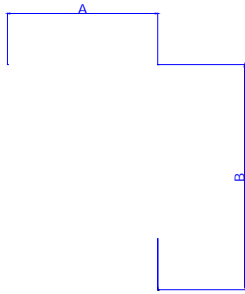
F



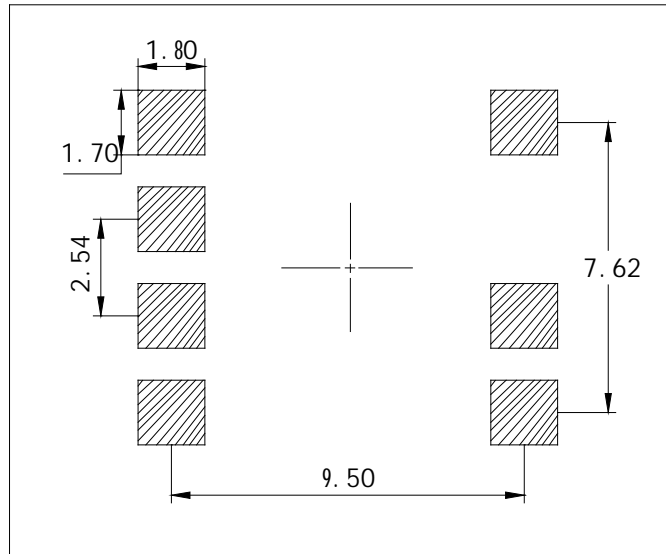
R	D					
	M			b		
	M	φ	M	M	φ	M
A	6.20		6.80	0.244		0.268
B	9.36		9.96	0.369		0.392
C	7.62		10.16	0.300		0.400
D	3.00		4.00	0.118		0.157
E	7.32		7.92	0.288		0.312
F	0.16		0.36	0.006		0.014
G	0.90		1.50	0.035		0.059
H	3.50		4.80	0.138		0.189
I	0.40		0.60	0.016		0.024
J	2.29		2.79	0.090		0.110
K	2.40		3.40	0.094		0.134

B

L



RECOMMENDED SOLDER MASK (Dimensions in mm unless otherwise stated)



TUBE SPECIFICATIONS (Dimensions in mm unless otherwise stated)

S



REFLOW INFORMATION

