

P_{tot} (T _j =25 ; θ_{JA} - FIG. 8)	V _p	2.25	W
--	----------------	------	---

ELECTRICAL CHARACTERISTICS

Symbol	Test Condition	Quadrant	Value	Unit
I _{GT}	V _D =12V L=33	- -		

ORDERING INFORMATION

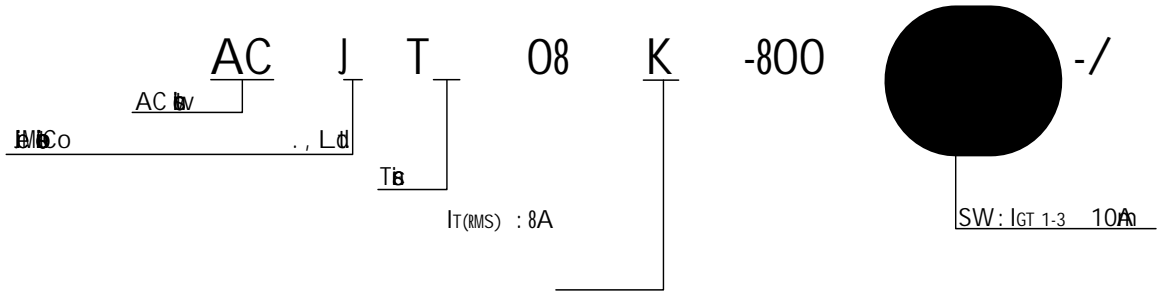


FIG.1: b8#18. 3524(T)IOSP@5016584464Tc3958668 c000228 c0012215 Dd1 0 117 Td 7 -06 0 2 64[-1 303. *P <9

FIG.7: $R_{th(jc)}$
 $^{\circ}C/W$

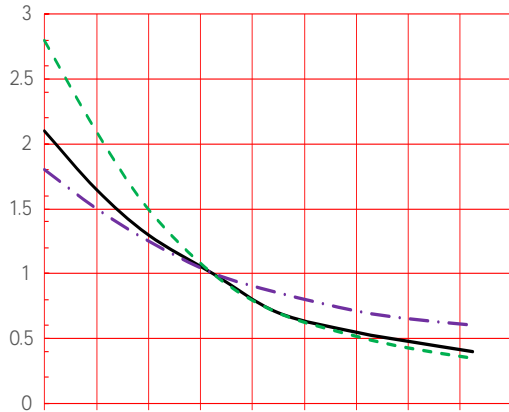
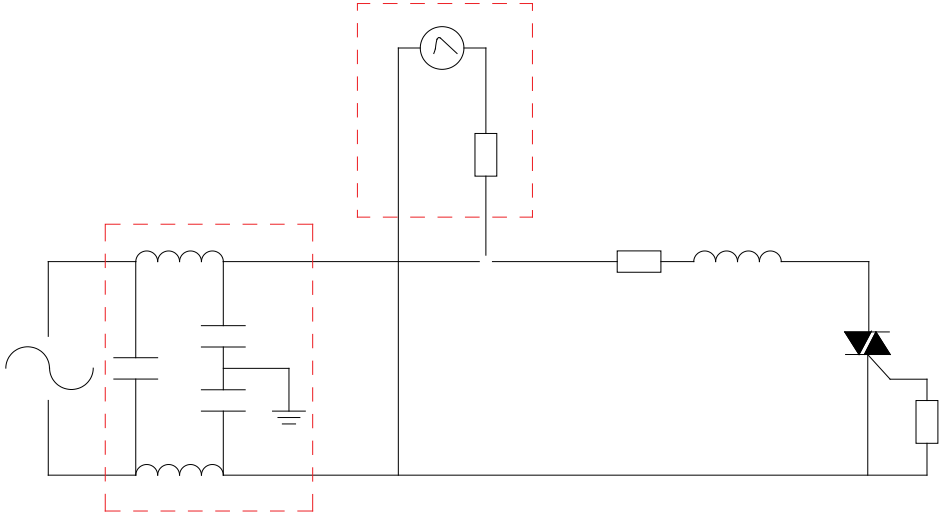


FIG. 8 ~~T0808~~

IEC-61000-4-5 4



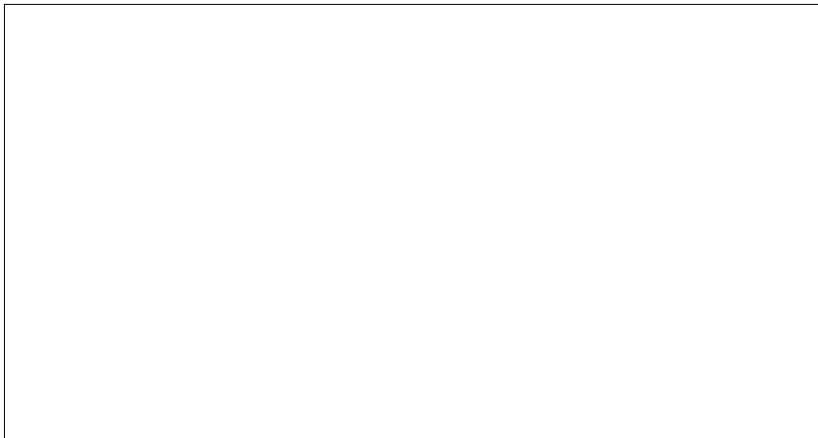
ORDERING INFORMATION

	de	
--	----	--

PACKAGE MECHANICAL DATA

Ré	Min		Din		Ia	
	Min	Typ	Ma	Min	Typ	Ma
A						
A2						
B						
C						
D						
E						

GB-3.438.5.764.8885.241-1G124 Td (A2) Tj 0 TTD
R10 (X0.5 (.)) JI 04.865



DELIVERY MODE

