



## JCT1275CS 75A SCR

RevA.1.1

### DESCRIPTION:

With high ability to withstand the shock loading of large current, JCT1275CS SCR provides high  $dV/dt$  rate with strong resistance to electromagnetic interference. It is especially recommended for use on solid state relay, UPS, SVC, power charger, T-tools etc. Package TO-247S is RoHS compliant.

### MAIN FEATURES

Symbol	Value	Unit
$I_{T(RMS)}$	75	A
$V_{DRM}/V_{RRM}$	1200	V
$I_{GT}$	10-80	mA

### ABSOLUTE MAXIMUM RATINGS

Parameter	Symbol	Value	Unit
Storage junction temperature range	$T_{stg}$	-40-150	
Operating junction temperature range	$T_j$	-40-125	
Repetitive peak off-state voltage ( $T_j=25^\circ C$ )	$V_{DRM}$	1200	V
Repetitive peak reverse voltage ( $T_j=25^\circ C$ )	$V_{RRM}$	1200	V



Average gate power dissipation ( $T_j=125$ )	$P_{G(AV)}$	1	W
Peak gate power	$P_{GM}$	22	W
Peak pulse voltage ( $T_j=25$ ; non-repetitive,off-state;FIG.7)	$V_{pp}$		

**JCT1275CS**

 **Jè Jè Mìc rē c b s Co , Ltd.**

---

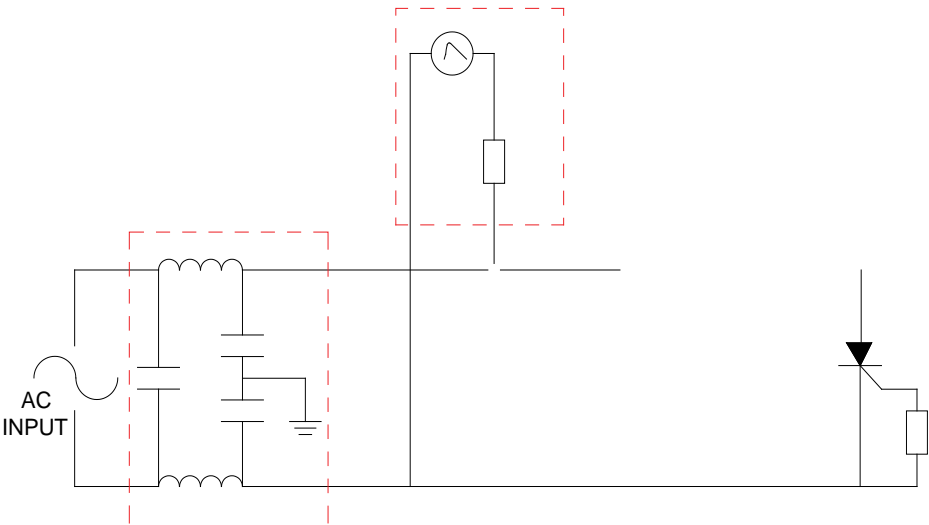
ORDERING INFORMATION

**FIG.1:** Maximum power dissipation versus RMS on-state current



**FIG.2:** RMS on-state current versus case temperature

FIG.7 Test circuit for inductive and resistive loads to IEC-61000-4-5 standards.





**ORDERING INFORMATION**

Order Code	Voltage $V_{DRM}/V_{RRM}$ (V)	IGT(A)	Package	Quantity (pcs)	Delivery date
JCT1275CS	1200	10-80	TO-247S	30	To

**Document History**

Date	Revision	Changes
Apr.13, 2023	A.1.0	Last update
Oct.16, 2025	A.1.1	Revise PACKAGE MECHANICAL DATA

JCT1275CS

 Jè Jè Mè è c b s Co., Ltd.

PACKAGE MECHANICAL DATA

