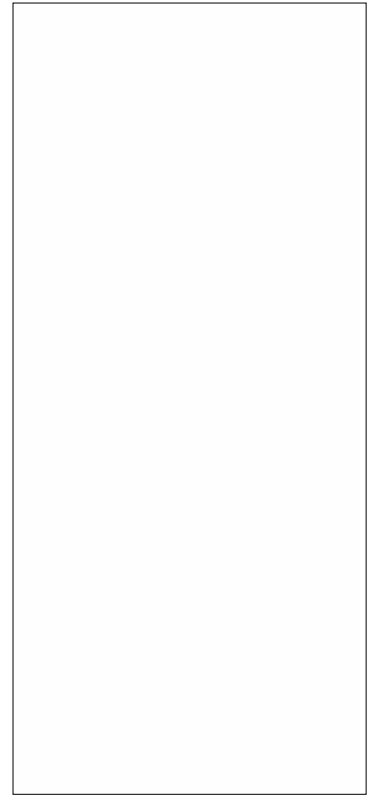




**JCT612F 12A SCR**



Peak gate current ( $t_p=20\mu s$ , $T_j=125$ )	$I_{GM}$	4	A
Average gate power dissipation ( $T_j=125$ )	$P_{G(AV)}$	1	W
Peak gate power	$P_{GM}$	10	W
Peak pulse voltage ( $T_j=25$ ; non-repetitive,off-state;FIG.7)	$V_{pp}$	0.5	kV

( $T_j=25$  unless otherwise specified)

Symbol	Test Condition	Value			Unit
		MIN.	TYP.	MAX.	

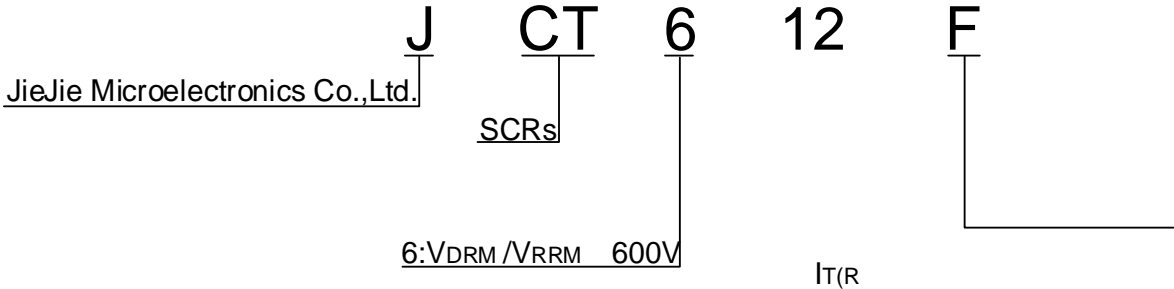
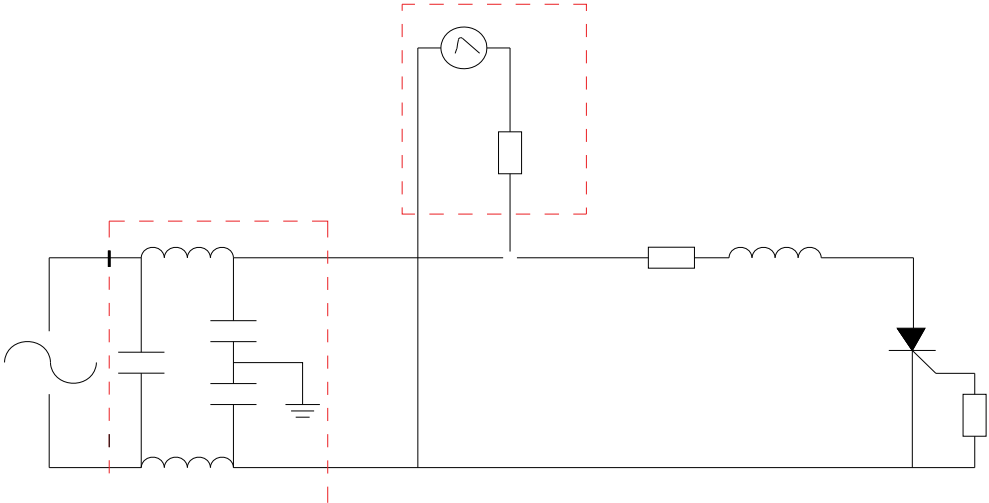




FIG.7 Test circuit for inductive and resistive loads to IEC-61000-4-5 standards.



Order code	Voltage $V_{DRM}/V_{RRM}$ (V)	IGT(mA)	Package	Base qty. (pcs)	Delivery mode
JCT612F	600	15	TO-220F(Ins)	50	Tube

### Document Revision History

Date	Revision	Changes
Apr.13, 2023	A.1.0	Last update
Sept.28, 2025	A.1.1	Revise PACKAGE MECHANICAL DATA



**JCT612F**