

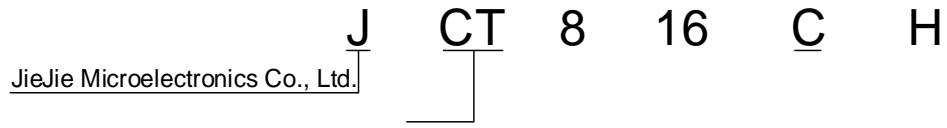
# JIEJIE MICROELECTRONICS CO., LTD.

---

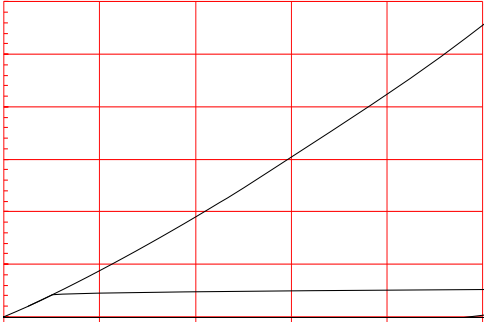
# JCT816CH

Average gate power dissipation ( $T_j=150$ )	$P_{G(AV)}$	1	W
Peak gate power	$P_{GM}$	20	W

**ORDERING INFORMATION**

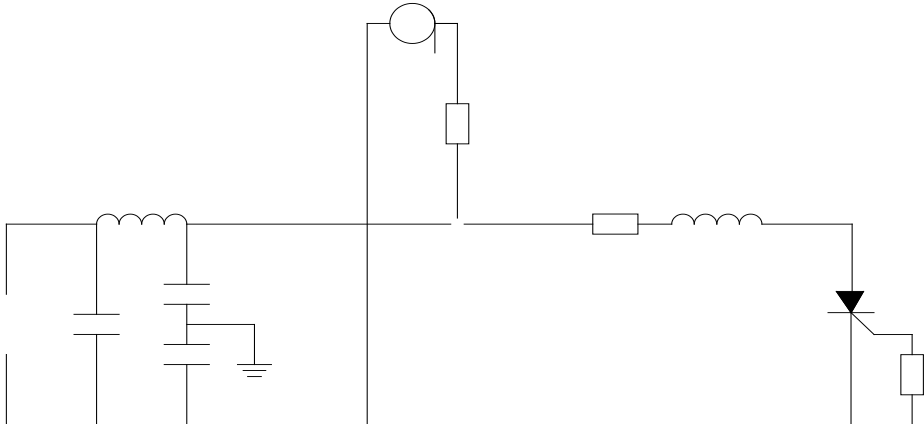


**FIG.1:** Maximum power dissipation versus RMS on-state current



**FIG.2:** RMS on-state current versus case temperature

FIG.7 Test circuit for inductive and resistive loads to IEC-61000-4-5 standards.



**ORDERING INFORMATION**

Order code	Voltage $V_{DRM}/V_{RRM}$ (V)	IGT(mA)	Package	Base qty. (pcs)	Delivery mode
JCT816CH	800	15	TO-220C	50	Tube

**Document Revision History**

Date	Revision	Changes
Jun.15, 2023	A.	



Information furnished in this document is believed to be accurate and reliable.  
However, Jiangsu JieJie Microelectronics Co., Ltd. assumes no responsibility for the  
consequences of use without consideration for such information nor use beyond it.

Howconi

rd

ratform(m)-3

(at)2