



JX007L 0.8A Sensitive SCR

Rev.A.1.0

DESCRIPTION:

1. This device is a sensitive SCR.
 2. It is suitable for use in a wide range of applications.
 3. It is available in TO-18 and TO-18A packages.
 4. It is characterized by low holding current and low leakage current.
 5. It is suitable for use in a wide range of applications.

MAIN FEATURES

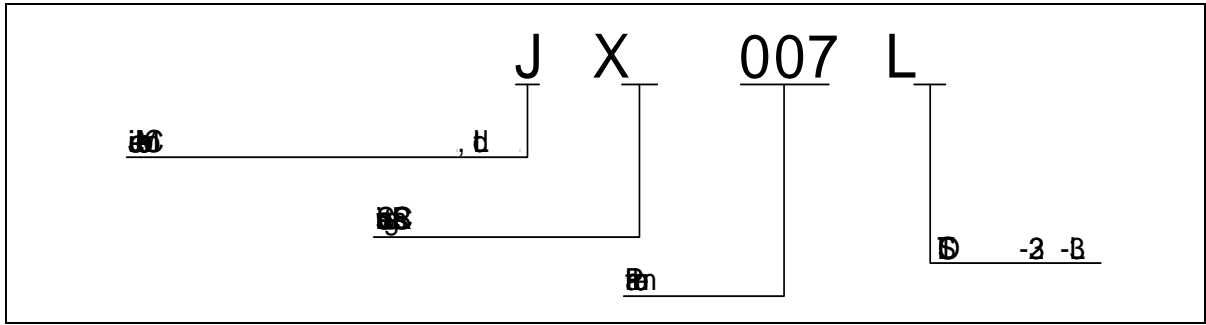
Symbol	Value	Unit
I_{T1}	0.8	A
V_{M1}	500	V
I_G	120	μA

ABSOLUTE MAXIMUM RATINGS

Parameter	Symbol	Value	Unit
Storage Temperature	T_S	-40 to 100	°C
Junction Temperature	T_j	-40 to 125	°C
Reverse Blocking Voltage	V_{M1}	500	V

1. The maximum junction temperature is 125°C.
 2. The maximum storage temperature is 100°C.
 3. The maximum reverse blocking voltage is 500V.
 4. The maximum forward current is 0.8A.
 5. The maximum gate current is 120 μA .

ORDERING INFORMATION



MARKING

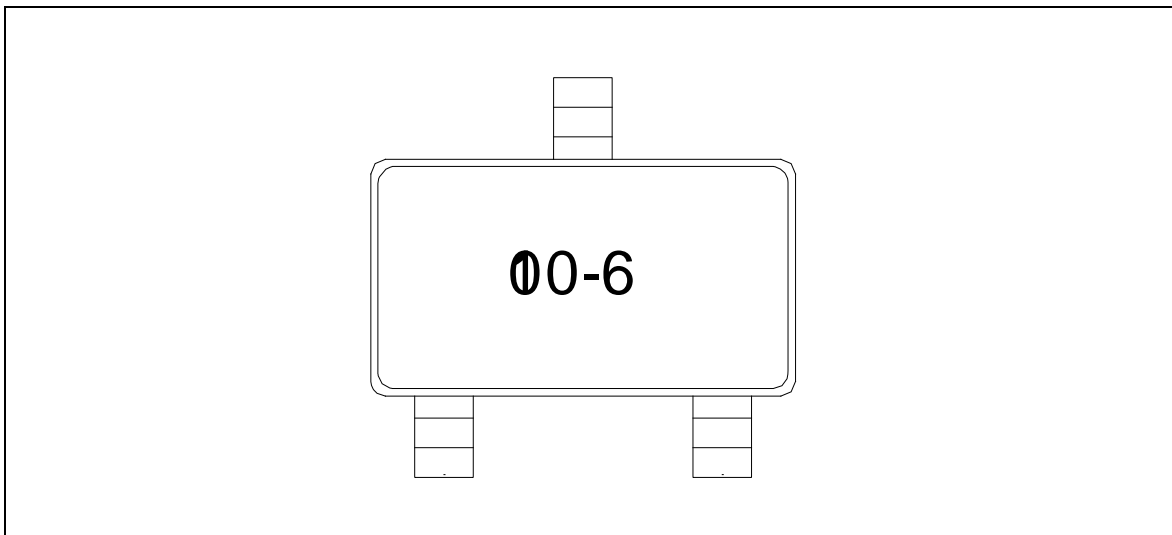







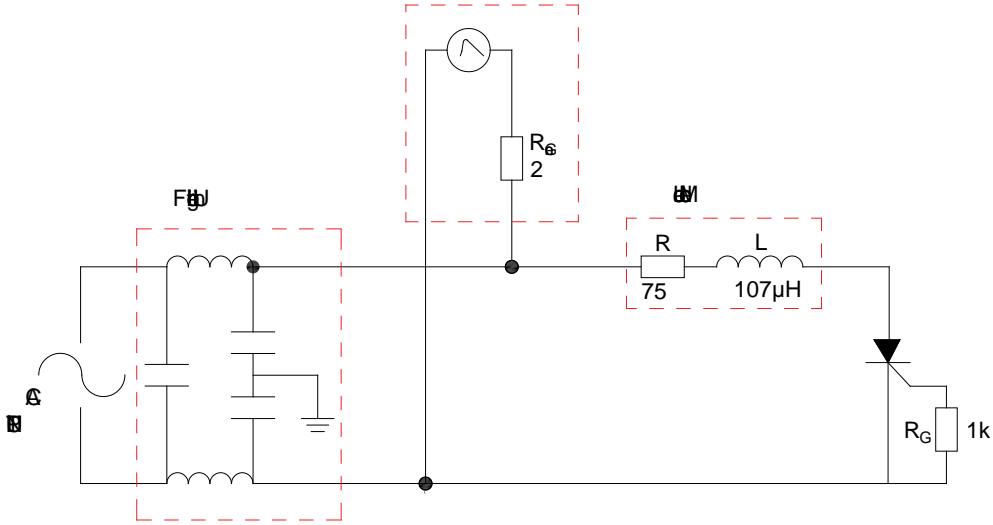
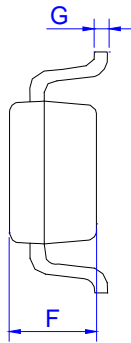
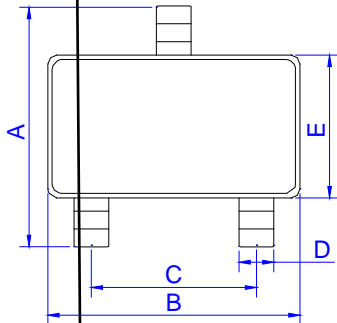
FIG.1: 
① 

FIG.2:  - 
② 

000-4 5
1.2/50 μ S voltage surge
8/20 μ S current surge



PACKAGE MECHANICAL DATA



R	D					
	M			lb		
	M	μ	M	M	μ	M
A	8		9	004		06
B		2			05	
C		0			005	
D	08		06	002		002
E		0			006	
F		7			006	
G		05			0006	
H	02		05 000			

© 2013 JieJie Microelectronics Co., Ltd.
All rights reserved.
No part of this publication may be reproduced, stored in a retrieval system, or transmitted, in any form or by any means, electronic, mechanical, photocopying, recording, or otherwise, without the prior written permission of JieJie Microelectronics Co., Ltd.

© 2013 JieJie Microelectronics Co., Ltd.

JieJie Microelectronics Co., Ltd.
No. 100, Zhongyuan Road, Zhongyuan Industrial Park, Zhongyuan District, Suzhou City, Jiangsu Province, P.R. China
Tel: +86 512 68528666 Fax: +86 512 68528666
E-mail: jjwdz@jjwdz.com <http://www.jjwdz.com>