



JST10C

| | | | |
|--|----------|---|----|
| Peak pulse voltage ($T_j=25$; non-repetitive, off-state; FIG.7) | V_{pp} | 4 | kV |
|--|----------|---|----|

ELECTRICAL CHARACTERISTICS ($T_j=25$ unless otherwise specified)

| Symbol | Test Condition | Quadrant | Value | | Unit |
|----------|-------------------------------------|----------|-------|-----|------|
| I_{GT} | $V_D=12V R_L=33$ | - - | MAX. | 35 | mA |
| V_{GT} | | - - | MAX. | 1 | V |
| V_{GD} | $V_D=V_{DRM} T_j=125$ $R_L=3.3k$ | - - | MIN. | 0.2 | V |
| I_L | $I_G=1.2I_{GT}$ | - | MAX. | 50 | mA |
| | | | | 60 | |

I_H $I_T=500mA$

M.48 0.48 re f 118.8 584.88 0.48 0.48 re f 239.2

JST10C-600CW

FIG.1: Maximum power dissipation versus RMS on-state current

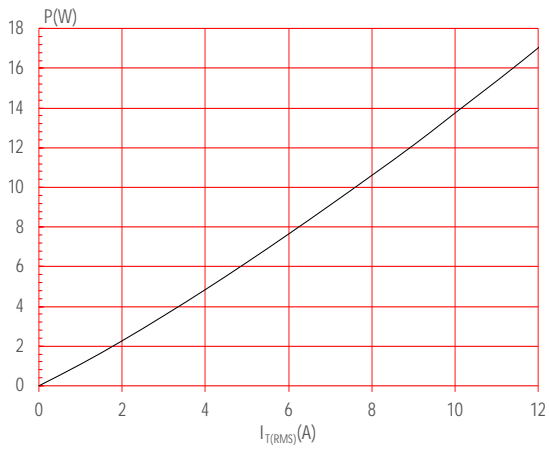
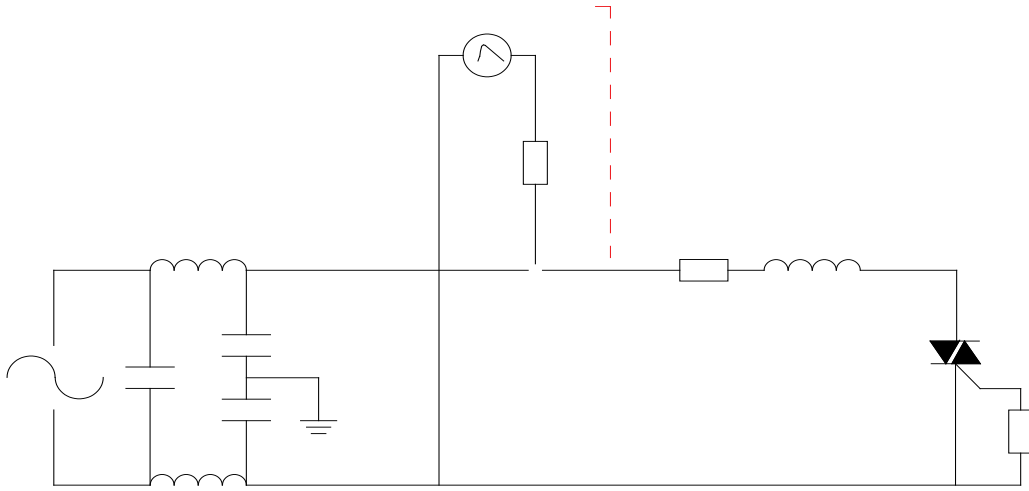


FIG.2: RMS on-state current versus case temperature



FIG.7 Test circuit for inductive and resistive loads to IEC-61000-4-5 standards



ORDERING INFORMATION

| Order code | Voltage V_{DRM}/V_{RRM} (V) | IGT(mA) | Package | Base qty. (pcs) | Delivery mode |
|--------------|----------------------------------|---------|---------|--------------------|------------------|
| | | H- I- J | | | |
| JST10C-600CW | 600 | 35 | TO-220C | 50 | Tube |

Document Revision History

| Date | Revision | Changes |
|--------------|----------|--------------------------------|
| Apr.11, 2023 | A.1.0 | Last updated |
| Oct.15, 2025 | A.1.1 | Revise PACKAGE MECHANICAL DATA |

PACKAGE MECHANICAL DATA



