

-



Peak pulse voltage ($T_j=25$; non-repetitive,off-state;FIG.7)	V_{PP}	3.5	kV
--	----------	-----	----

ELECTRICAL CHARACTERISTICS ($T_j=25$ unless otherwise specified)

I_{GT}	$V_D=12V R_L=33$	- -	MAX.	5	mA
				10	
V_{GT}		ALL	MAX.	1.3	V
V_{GD}	$V_D=V_{DRM} T_j=125$ $R_L=3.3k$	ALL	MIN.	0.2	V
I_L	$I_G=1.2I_{GT}$	- -	MAX.	5	mA
				20	
I_H	$I_T=50mA$		MAX.	7	mA
dV/dt	$V_D=540V$ Gate Open $T_j=110$		MIN.	100	V/ μs
(dV/dt)c	(dI/dt)c=0.44A/ms, $T_j=110$		MIN.	3	V/ μs
t_{on}	$I_G=20mA I_A=200mA I_R=20mA$ $T_j=25$		TYP.	2.5	μs
t_{off}				25	

STATIC CHARACTERISTICS

--	--	--	--

V_{TM}



ORDERING INFORMATION

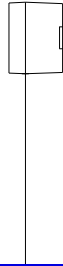
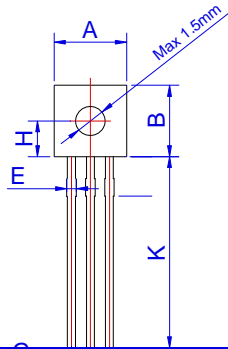
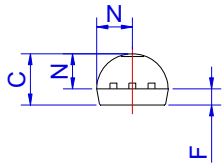


Maximum power dissipation versus RMS
on-state current

RMS on-state current versus case
temperature



PACKAGE MECHANICAL DATA





DELIVERY MODE

TO-92	Bulk Pack	1,000	10,000	50,000

W2			1.00
D0	3.80	4.00	4.20
H	-1.00	0	1.00
L1	2.50		
H	18.00	19.00	20.00

