



JST131W-800D 1A TRIAC

Rev.A.1.1

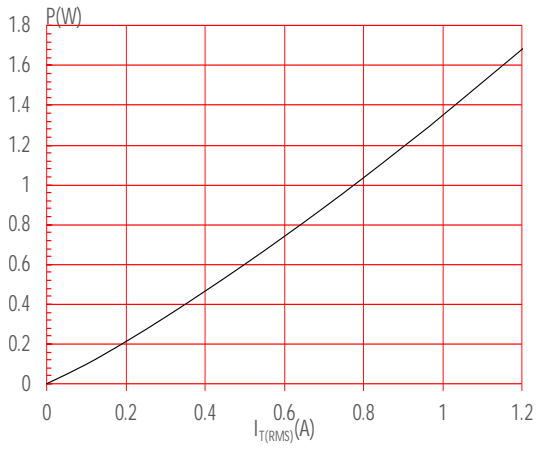
JOTTJ 0 Tc 0 Tw 2.6 0 Td [()]Tj -0.001 Tc 0.006 Tw 1232 0 Td [(68210 ( )23TJ 0

The JST131W-800 .heri10 (a7 (STc30 ))TJ 0.224 Tc -0.004 Tw 25..10 Td [(.)i)( )sNN 1 R N-A.C





**FIG.1:** Maximum power dissipation versus RMS on-state current

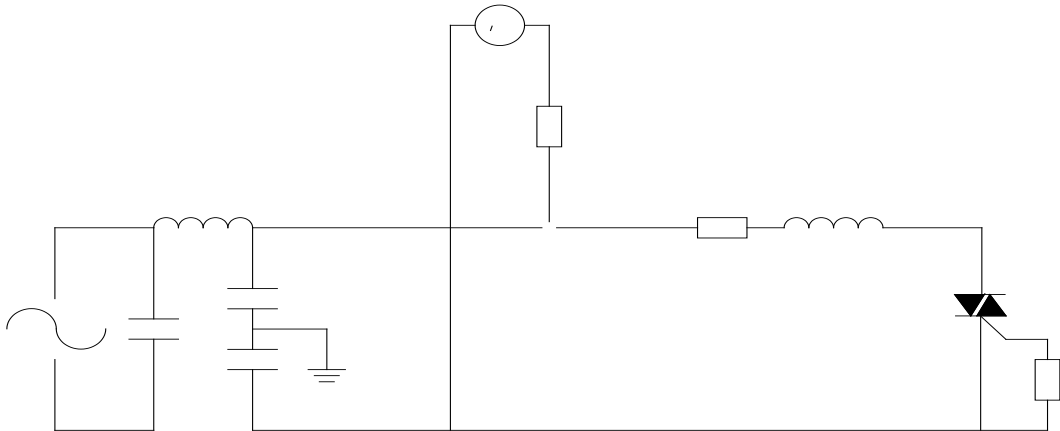


**FIG.2:** RMS on-state current versus case temperature



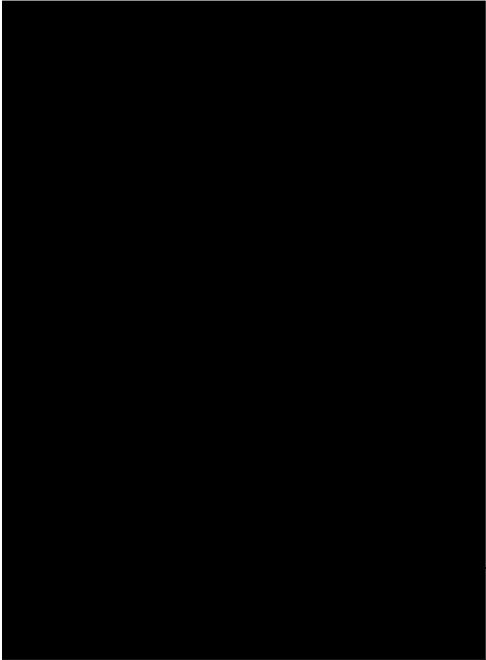


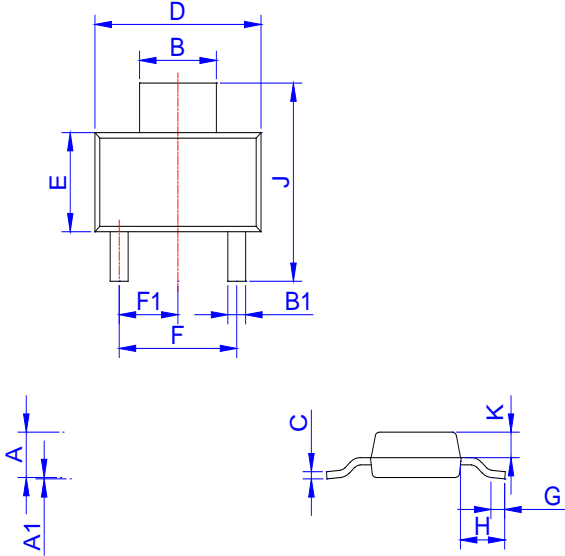
FIG.8 Test circuit for inductive and resistive loads to IEC-61000-4-5 standards

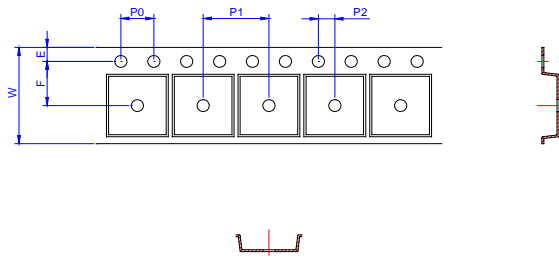




IGT(mA)	Package	Base qty. (pcs)	
---------	---------	--------------------	--







Ref.	Dimensions					
	Millimeters			Inches		
	Min.	Typ.	Max.	Min.	Typ.	Max.
W	-		12.30	-		0.482
E	1.65	1.75	1.85	0.065	0.069	0.073
F	5.45	5.50	5.55	0.215	0.217	0.219
D0		1.55	1.60		0.061	0.063
D1		-	-			
P0	3.90	4.00	4.10	0.154	0.157	0.161
P1	7.90	8.00	8.10	0.311	0.315	0.319
P2	1.95	2.00	2.05	0.077	0.079	0.081
10P0	39.80	40.00	40.20	1.567	1.575	1.583
A0	6.85	6.95	7.05	0.269	0.273	0.276
B0	7.15	7.25	7.35	0.280	0.284	0.288
K0	1.95	2.05	2.15	0.076	0.080	0.084
T	0.20	0.25	0.30	0.008	0.010	0.012

