





**JST134U-600E**

**JieJie Microelectronics Co., Ltd.**

FIG.1: Maximum power dissipation versus RMS on-state current

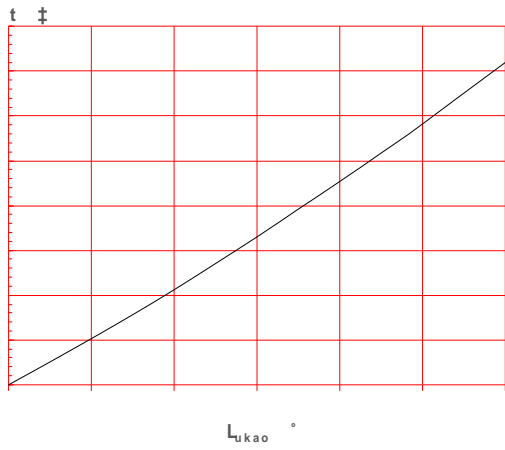


FIG.2: RMS on-state current versus case temperature

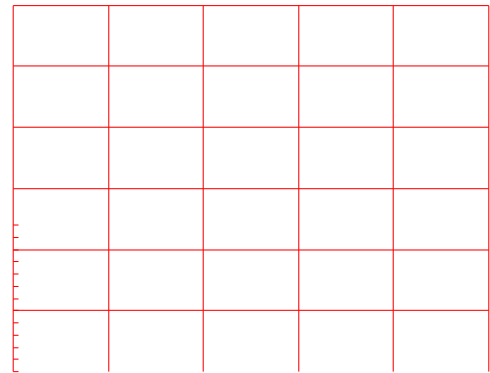
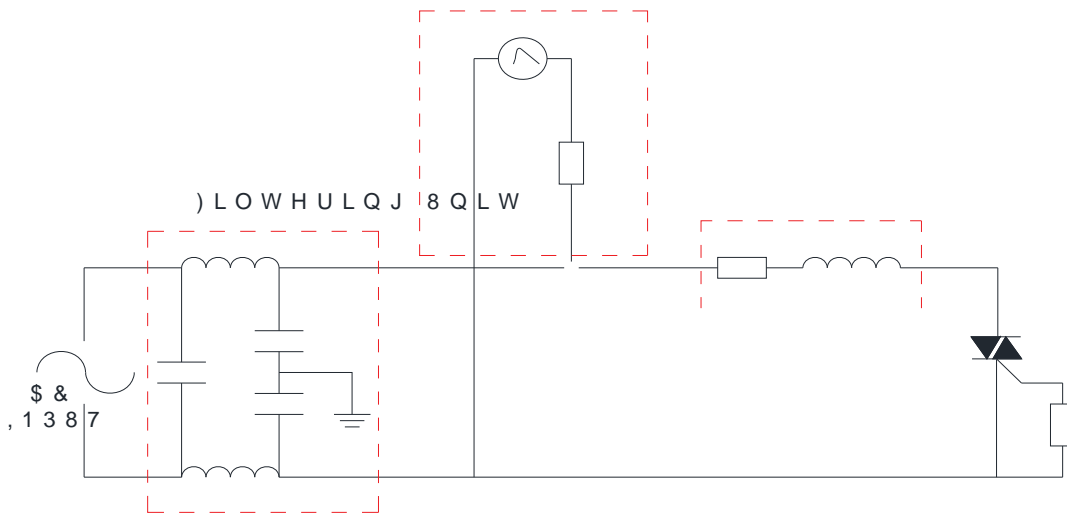


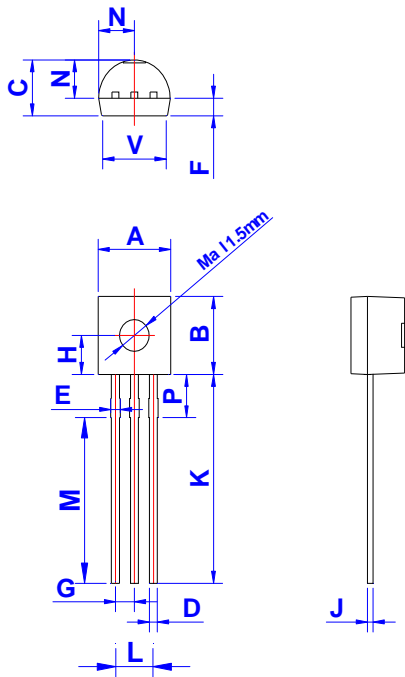
FIG. 7 HVW FLUXLW IRU LQGXFVLYH DQG UMDQGDUGV UYGH OR

, (& 6WDQGDUGV  
 6XUJH \*HQHUDWRU  
 6YR7





t ° /M ° D9 a9/I ° bL/ ° O 5 ° u °



Re Z.	Dimensions					
	Millimeters			Inc \ es		
	Min.	Typ.	Ma l .	Min.	Typ.	Ma l .
A	4.45		5.20	0.1 + 5		0.205
B	4.32		5.33	0.1 + 0		0.210
C	3.1 ,		4.19	0.125		0.165
D	0.40 +		0.533	0.016		0.021
E	0.50		0. + 0	0.020		0.02 ,
F	1.10		1.30	0.043		0.051
G	1.10		1.40	0.043		0.055
H	2.20		2.40	0.0 , +		0.094
J	0.36		0.50	0.014		0.020
K	12. + 0		15.0	0.500		0.591
L	2.44		2.64	0.096		0.104
M	11.64		12.04	0.45 ,		
N	2.04		2.66	0.0 , 0		0.105
P	1. , 0		2.30	0.0 + 1		0.091
V	4.10		4.50	0.161		0.1 + +



In Z ormation Z urnis \ ed in t uis d is believed to be accurate and reliable. Ho k ever, Jiangsu JieJie Microelectroni Co., Ltd. assumes no responsi ty Z or t \ e consequences o Z use k it \ out consideration Z or suc \ in Z ormation nod use b yom information mentioned in t \ is document is sub ^ ect\ tange k it \ out notice, apart Z rom t \ at k \ en an agreement is signed, Jiangsu JieJie coplies k it \ t \ e agreement. Products and in Z ormation provided \ is document \ ave n iaion ~ m M ormation ~