



JST26UF-800BW 25A TRIAC

Rev.A.1.0

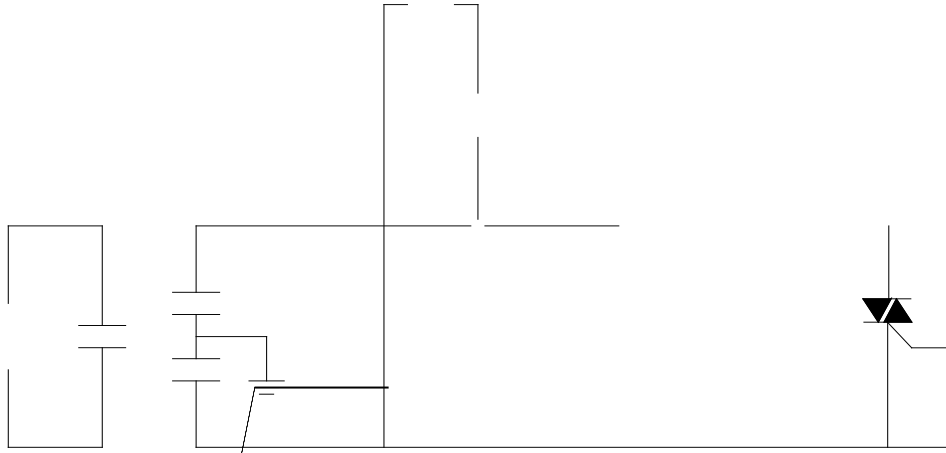
DESCRIPTION:

⊠ 36 ⊞ -800BW ~~http~~

| | | | | |
|-------------|---------------------------------------|-------------|-----|---|
| $P_{G(AV)}$ | $f_j=125$) | $P_{G(AV)}$ | 0.5 | W |
| P_{GM} | | P_{GM} | 10 | W |
| V_p | ($T_j=25$; ρ - ρ - FIG.7) | V_p | 5 | V |

ELECTRICAL CHARACTERISTICS($T_j=25$)

| Symbol | Test Condition | Quadrant | Value | Unit |
|----------|------------------|----------|-------|------|
| I_{GT} | $V_D=12V$ $L=33$ | - - | MAX . | 50 |
| V_{GT} | | - - | MAX . | 1 |
| V_{GD} | V | | | |



PACKAGE MECHANICAL DATA



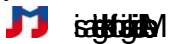
© 2023 JieJie Microelectronics Co., Ltd.
All rights reserved.
This document is the property of JieJie Microelectronics Co., Ltd.
No part of this document may be reproduced, stored in a retrieval system, or transmitted in any form or by any means, electronic, mechanical, photocopying, recording, or otherwise, without the prior written permission of JieJie Microelectronics Co., Ltd.

© 2023 JieJie Microelectronics Co., Ltd.

© 2023 JieJie Microelectronics Co., Ltd.

© 2023 JieJie Microelectronics Co., Ltd.

© 2023 JieJie Microelectronics Co., Ltd.



© 2023 JieJie Microelectronics Co., Ltd.

© 2023 JieJie Microelectronics Co., Ltd.