



T0650H-8E 6A TRIAC

Rev.A.1.0

DESCRIPTION:

650H-8E 6A TRIAC

650H-8E 6A TRIAC

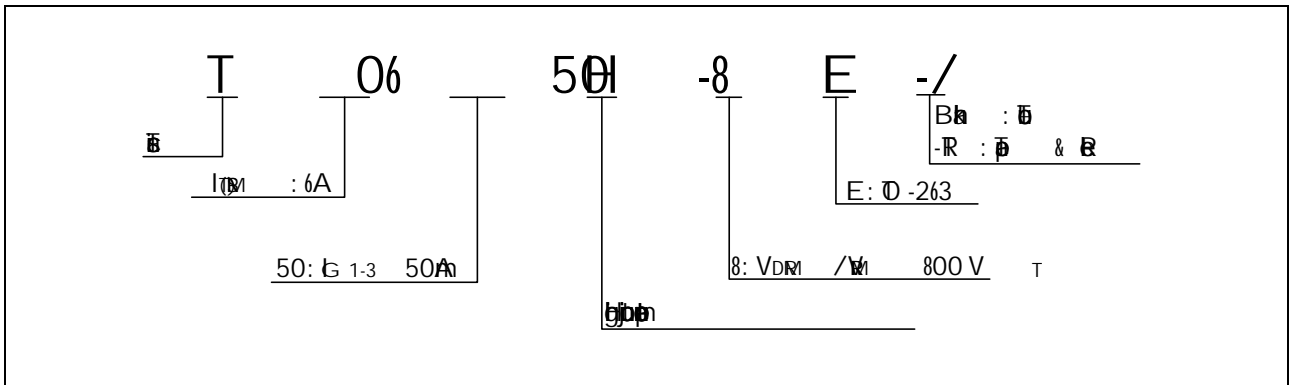
650H-8E 6A TRIAC

I_{G1} ($T_j=25^\circ\text{C}$; $V_D=12\text{V}$; $R_L=33\Omega$; $I_G=8\text{mA}$)	V_p	4	V
-----------------------------------------------------------------------------------------------	-------	---	---

ELECTRICAL CHARACTERISTICS (at $T_j=25^\circ\text{C}$)

Symbol	Test Condition	Quadrant	Value	Unit
I_G	$V_D=12\text{V}$; $R_L=33\Omega$	- -	50	mA
V_G		- -	1	V
V_G	$V_D=V_{DM}$; $T_j=150^\circ\text{C}$ $R_L=3.3\text{K}$	- -	0.2	V
I_L	$I_G=1.2\text{mA}$	-	70	mA
			100	
I_H	$I_T=100\text{mA}$		50	mA

ORDERING INFORMATION



MARKING

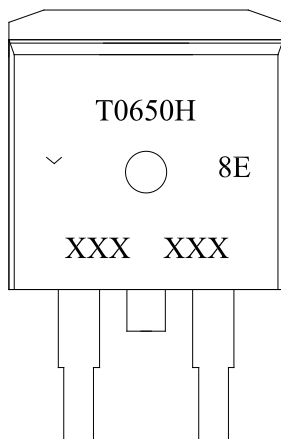
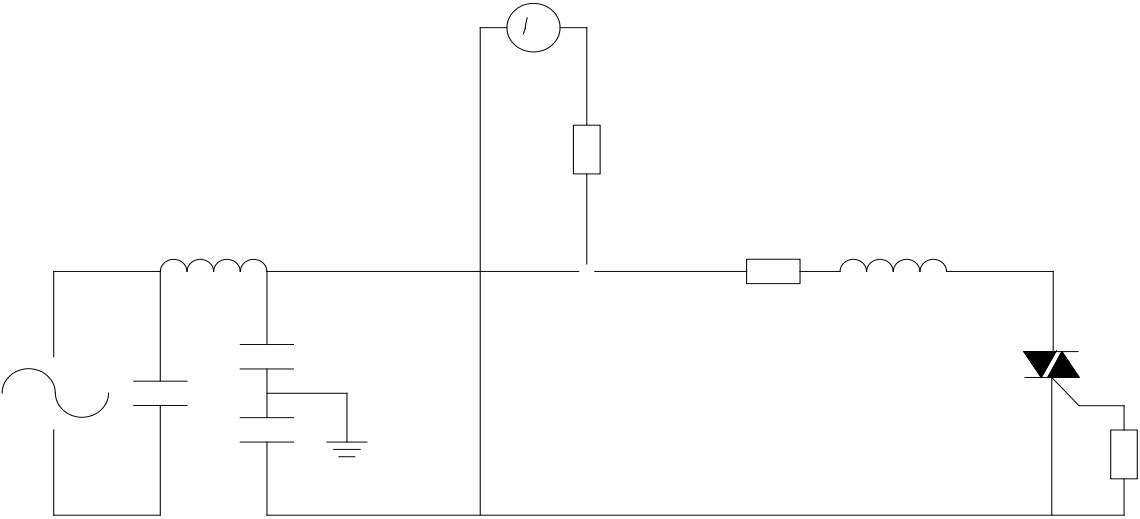


FIG.7: Pin 1

1

(

g



DELIVERY MODE



